

Durapipe PL-X fuel systems are designed to safely convey petrol, diesel and fuel oil in below ground applications while ensuring harmful emissions of volatile organic compounds cannot escape into the environment.

Under pressure or vacuum, PL-X fuel systems have a 30 year design life and exceed the performance requirements of the Energy Institute (formerly the Institute of Petroleum) performance specification for underground fuel systems, OFTEC and international standards.

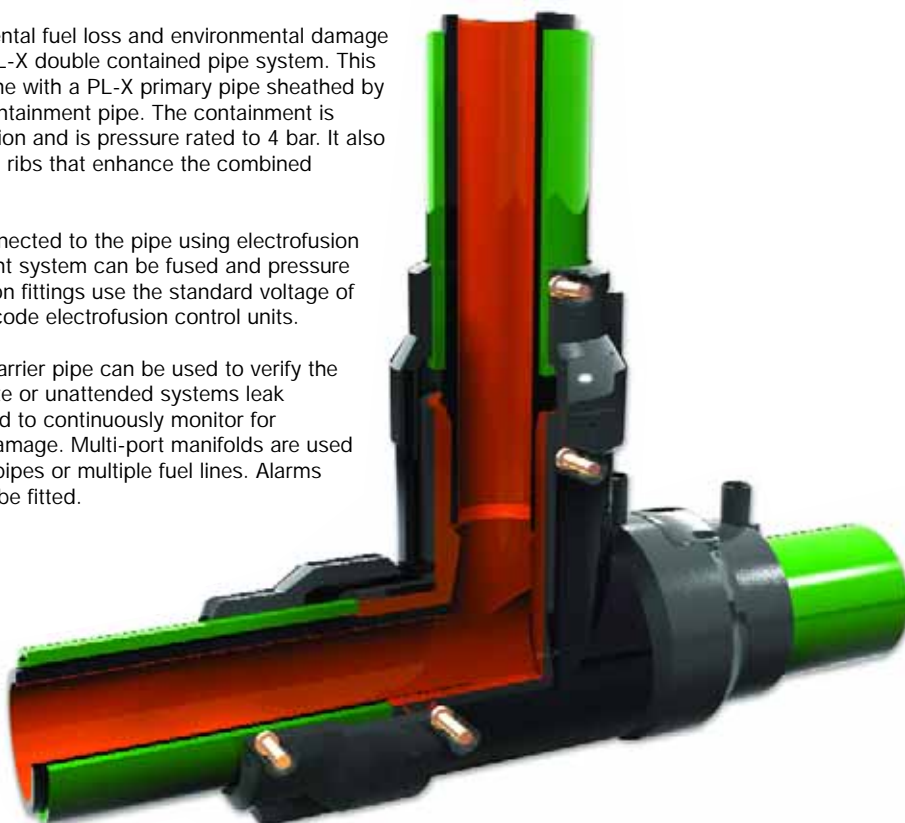
Durapipe PL-X fuel systems are co-extruded using virgin grade materials and have a polymeric structure that combines the strength and ductility of polyethylene with the chemical resistance of a polyamide liner.

The tough outer layer provides excellent resistance to abrasion, mechanical and physical abuse and is corrosion and maintenance free. The brightly coloured bonded polyamide lining and composite pipe structure ensures negligible permeation, low absorption and dimensional stability.

Additional security against accidental fuel loss and environmental damage is achieved using the Durapipe PL-X double contained pipe system. This unique pipe is manufactured in-line with a PL-X primary pipe sheathed by a robust close fit polyethylene containment pipe. The containment is colour coded green for identification and is pressure rated to 4 bar. It also incorporates internal self-centring ribs that enhance the combined strength of the system.

Double contained fittings are connected to the pipe using electrofusion joints. The carrier and containment system can be fused and pressure tested independently. Electrofusion fittings use the standard voltage of 39.5V for use with manual or barcode electrofusion control units.

Periodic pressure testing of the carrier pipe can be used to verify the reliability of the system. On remote or unattended systems leak detection systems can be installed to continuously monitor for accidental losses or accidental damage. Multi-port manifolds are used to simultaneously monitor zoned pipes or multiple fuel lines. Alarms and/or warning devices can also be fitted.



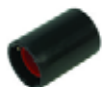
Standard Product Range



P-LX/Secondary Containment	6m	43 997 099	50#90mm
P-LX/Secondary Containment	6m	43 997 058	50#110mm
P-LX/Secondary Containment	6m	43 997 046	63#110mm
P-LX/Secondary Containment	6m	43 997 047	90#160mm
P-LX/Secondary Containment	6m	43 997 048	110#160mm
P-LVX/Secondary Containment	6m	43 997 049	63#110mm
P-LVX/Secondary Containment	6m	43 997 050	90#160mm
P-LVX/Secondary Containment	6m	43 997 051	110#160mm



P-LX/Secondary Containment	50m	43 624 413	32#40mm
P-LX/Secondary Containment	50m	43 624 444	50#63mm
P-LX/Secondary Containment	50m	43 624 445	63#75mm
P-LX/Secondary Containment	100m	43 649 413	32#40mm
P-LX/Secondary Containment	100m	43 649 444	50#63mm
P-LX/Secondary Containment	100m	43 649 445	63#75mm



P-LX Coupler/Closure Assembly	EF/Short spigot	43 997 061	32#40mm
P-LX Secondary Contained EF Coupler	EF/Short spigot	43 249 310	50#90mm
P-LX Secondary Contained EF Coupler	EF/Short spigot	43 249 311	63#110mm



P-LX Formed 90° Bend	Spigot/Spigot	43 977 141	32#40mm
P-LX Secondary Contained 90° Elbow	EF/Short Spigot	43 248 310	50#90mm
P-LX Secondary Contained 90° Elbow	EF/Short Spigot	43 248 311	63#110mm
P-LX Secondary Contained 90° Elbow	Spigot/Short Spigot	43 997 009	90#160mm
P-LX Secondary Contained 90° Elbow	Spigot/Short Spigot	43 997 014	110#160mm
P-LVX Secondary Contained 90° Elbow	Spigot/Short Spigot	43 997 019	90#160mm
P-LVX Secondary Contained 90° Elbow	Spigot/Short Spigot	43 997 022	110#160mm



P-LX Secondary Contained 45° Elbow	EF/Short Spigot	43 997 116	50#90mm
P-LX Secondary Contained 45° Elbow	EF/Short Spigot	43 997 041	63#110mm
P-LX Secondary Contained 45° Elbow	EF/Short Spigot	43 997 100	90#160mm
P-LX Secondary Contained 45° Elbow	EF/Short Spigot	43 997 148	110#160mm



P-LX Secondary Contained Tee	EF/Short Spigot	43 246 310	50#90mm
P-LX Secondary Contained Tee	EF/Short Spigot	43 246 311	63#110mm

Short Pattern Secondary Containment EF closures and access fittings to seal and/or provide monitoring of the interstice.



EF Secondary Closure	EF	43 278 413	32#40mm
EF Secondary Closure	EF	43 278 444	50#63mm
EF Secondary Closure	EF	43 278 445	63#75mm
EF Secondary Closure	EF	43 278 459	63#90mm
EF Secondary Closure	EF	43 278 472	75#110mm



EF Secondary Closure c/w Access Port	EF	43 279 444	50#63mm
EF Secondary Closure c/w Access Port	EF	43 279 445	63#75mm



Secondary Contained Access Tee	EF	43 997 133	32#40mm x 1/2" BSPT **
Secondary Contained Extended Branch Access Tee (M)	EF	43 997 147	32#40mm x 3/4" BSPT **

**require a 43 278 413 as a closure



The following short pattern EF couplers, closures and access fittings are designed for use with the Durapipe Secondary Containment System and must never be used to join P-LX or P-LVX pipes.

For joining straight lengths of secondary containment pipes only. NB. These couplers require a 43EZ0048 (CB315) Control Box	EF(Auto - CB315)	43 110 313	90mm
	EF(Auto - CB315)	43 110 314	110mm
	EF(Auto - CB315)	43 110 317	160mm

Durapipe P-LX double containment standard range is available in diameters from 32mm to 110mm. Bespoke systems are available in diameters up to 315mm.

